

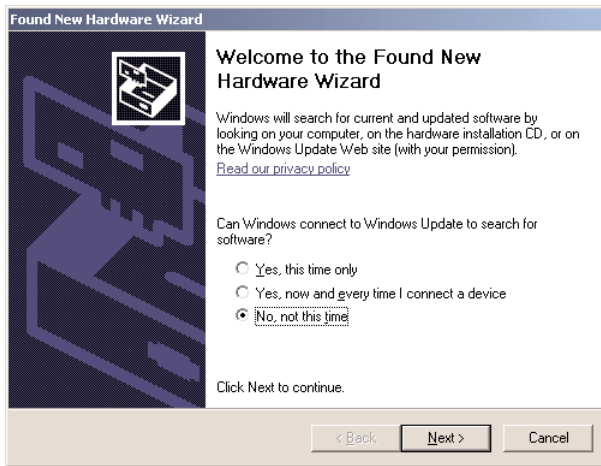


Installing a GENIE Plug & Play cable



A GENIE Plug & Play cable allows your computer to talk to a GENIE microcontroller. This worksheet leads you through the steps needed to get a GENIE Plug & Play cable working, which involves installing special information (known as driver) that tells your computer how the cable operates.

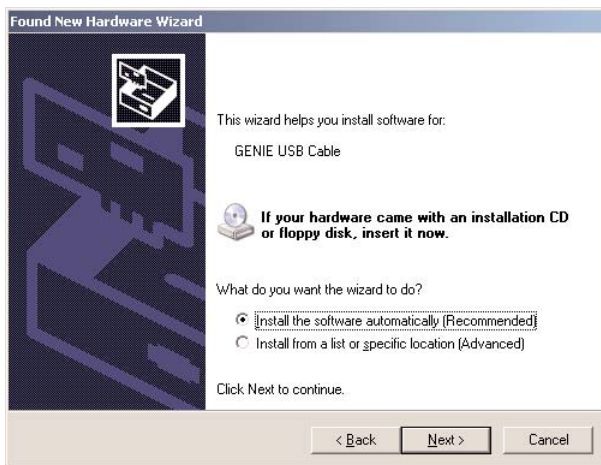
1



Connect the GENIE Plug & Play cable to a spare USB port on your computer. Windows will then launch the **Found New Hardware Wizard**.

If your computer is connected to the Internet you will be shown the screen on the left. Select the **No, not at this time** option and then click on the **Next** button to continue.

2

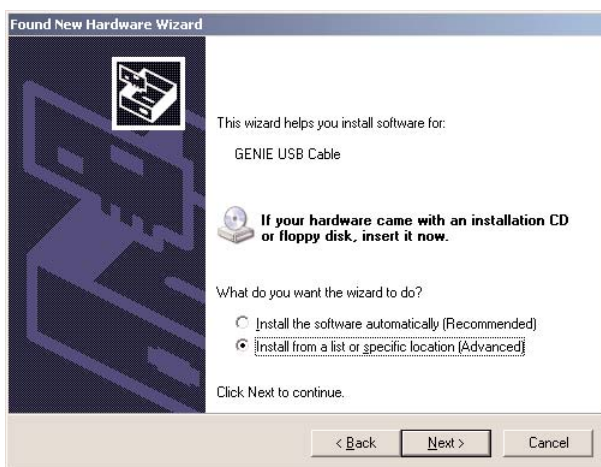


If you have a GENIE Design Studio or Circuit Wizard 1.5 CD, insert the CD into your computer and select **Install the software automatically**.

Otherwise, select the **Install from a list or specific location** option. The files will have been installed in the Drivers folder located within the GENIE Design Studio or Circuit Wizard 1.5 application files. You can also download the driver files by visiting www.genieonline.com/cable.

Click on the **Next** button to continue.

3



This screen will only appear if you chose to install the drivers from a specific location.

Choose **Search for the best driver in these locations** and then enter the location of the files in the location field.

Click on the **Next** button to continue.





Installing a GENIE Plug & Play cable



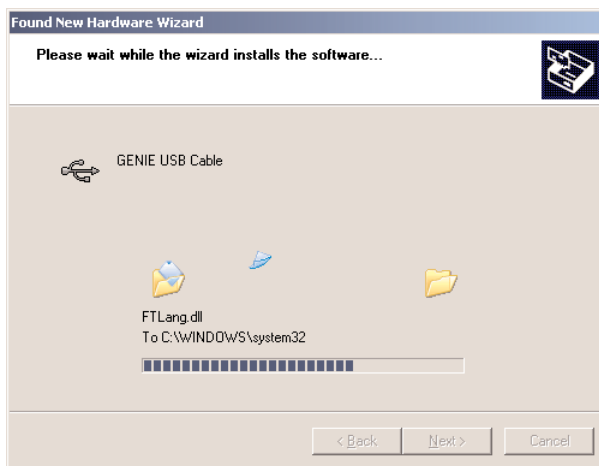
4



Windows will then issue a warning regarding the installation of this new hardware.

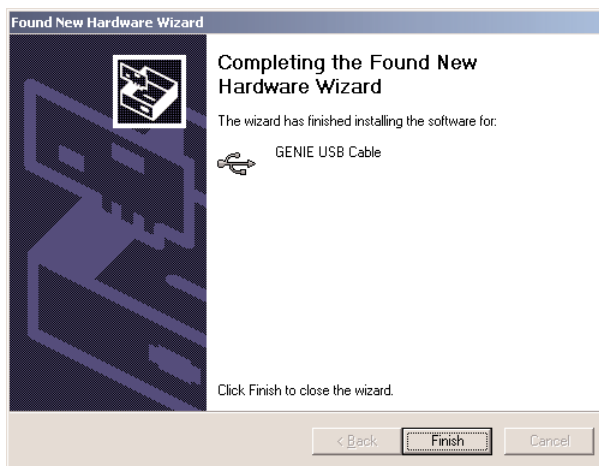
Click on the **Continue Anyway** button.

5



Windows will then proceed to copy the necessary files onto your computer.

6



Once completed, you will see the following screen.

At this point your GENIE Plug & Play cable has been successfully installed and no further action is required.

The software will automatically access the GENIE Plug & Play cable whenever it is connected.

You will not need to configure COM ports or change any other settings.

 **Finished!**

