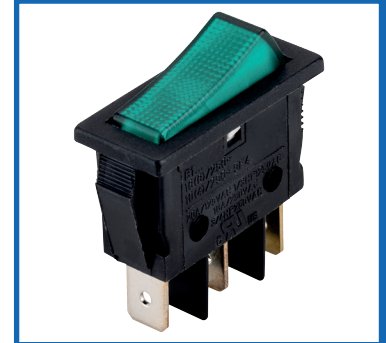


Illuminated Rocker Switches SPST On-Off 250V AC 16A - Green/Black



DESCRIPTION

Universal type illuminated switches with snap-in fixing for a suitably sized cut-out.

DISTINCTIVE FEATURES

- Illuminated
- SPST
- On-Off, Maintained-Maintained
- Legend: 0/1

APPLICATIONS

Suitable for mains powered equipment, such as coffee machines and other small appliances.

16V

250V
AC

IP65



ELECTRICAL SPECIFICATION

Rating	EN 61058	UL 1054 CSA C22.2
Rating resistive and/or motor Switching	10 (4) A / 250 VAC	10 A - 125 / 250 VAC
	6 (4) A / 250 VAC - 5E4	1/3 HP - 125 VAC
		1/2 HP - 250 VAC
	T125/55 °C - T125 °C	T105 °C



GENERAL SPECIFICATION

Type	Illuminated rocker switch
Contacts	SPST
Illumination	Neon



CERTIFICATION AND STANDARDS

Standards	EN 61058 UL 1054 CSA C.22.2 no 55-1986
-----------	----------------------------------------------



ENVIRONMENTAL/OPERATING SPECIFICATION

Operating Temperature	T65°C
Flame resistance	UL94-V2
Glow wire test	850°C
Ip Protection Rating	IP65

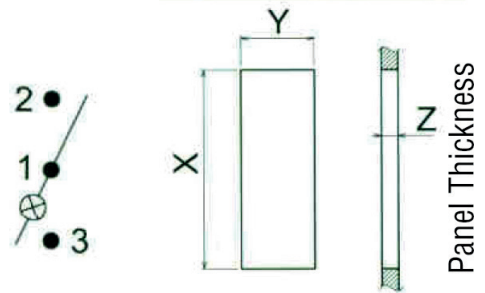
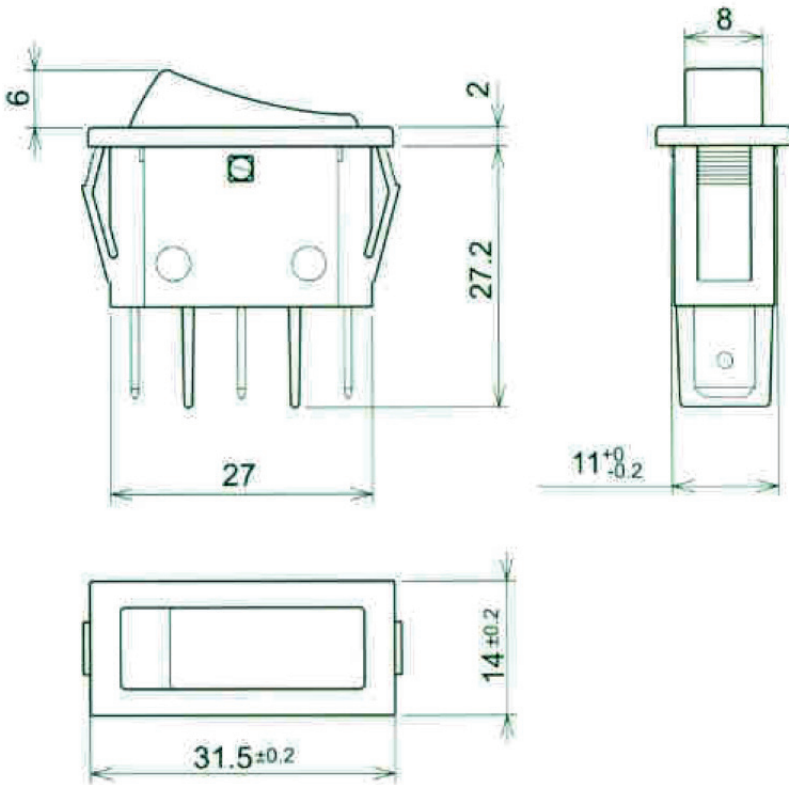


TERMINALS

Type	Solder tags
Dimensions	6.3 x 0.8mm x 9.5mm long



DIMENSIONS/DRAWINGS



Z	Y	X
0.70 - 1.25	11.0 $\begin{smallmatrix} \pm 0.2 \\ 0 \end{smallmatrix}$	30.0 $\begin{smallmatrix} \pm 0.2 \\ 0 \end{smallmatrix}$
1.25 - 2.00	11.0 $\begin{smallmatrix} \pm 0.2 \\ 0 \end{smallmatrix}$	30.2 $\begin{smallmatrix} \pm 0.2 \\ 0 \end{smallmatrix}$
2.00 - 3.00	11.0 $\begin{smallmatrix} \pm 0.2 \\ 0 \end{smallmatrix}$	30.6 $\begin{smallmatrix} \pm 0.2 \\ 0 \end{smallmatrix}$
3.00 - 4.00	11.0 $\begin{smallmatrix} \pm 0.2 \\ 0 \end{smallmatrix}$	30.8 $\begin{smallmatrix} \pm 0.2 \\ 0 \end{smallmatrix}$



PART NUMBER TABLE

Part Number	EAN	UNSPSC	Country of Origin
52-2780	5053556003075	39122226	Italy



OPTIONS

Contacts	e.g. DPDT, SPST
Legend	Custom legends available
GWT	e.g. GWT No flame (<2sec) 750°C
MOQs May Apply	

R-TECH

Tried & trusted technology

Important Notice: This data sheet and its contents (the "Information") belong to Rapid Electronics Limited or are licensed to it. No licence is granted for the use of it other than for information purposes in connection with the products to which it relates. No licence of any intellectual property rights is granted. The Information is subject to change without notice and replaces all data sheets previously supplied. The Information supplied is believed to be accurate but Rapid Electronics Limited assumes no responsibility for its accuracy or completeness, any error in or omission from it or for any use made of it. Users of this data sheet should check for themselves the Information and the suitability of the products for their purpose and not make any assumptions based on information included or omitted. Liability for loss or damage resulting from any reliance on the Information or use of it (including liability resulting from negligence or where Rapid Electronics Limited were aware of the possibility of such loss or damage arising) is excluded. This will not operate to limit or restrict Rapid Electronics Limited's liability for death or personal injury resulting from its negligence.