

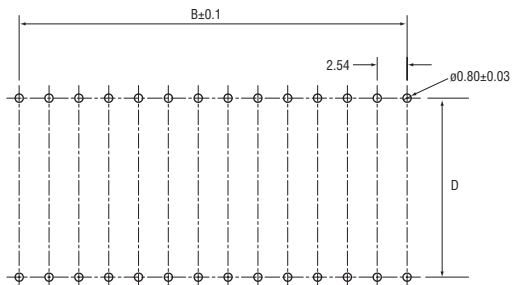
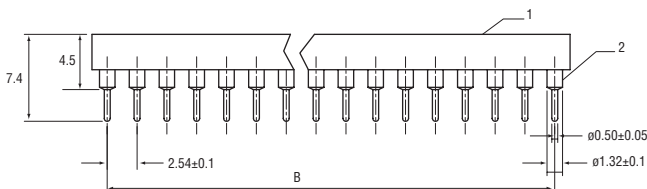
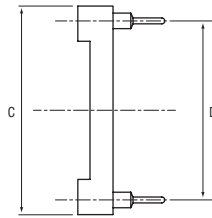
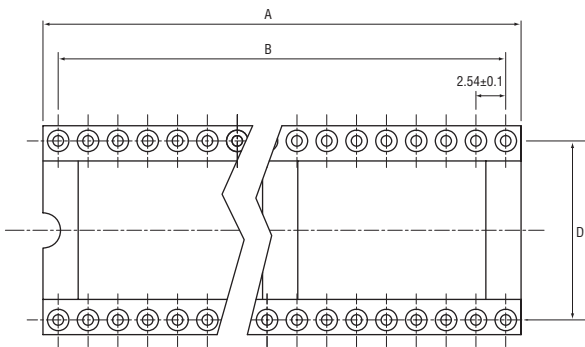
Notes:

1. Electrical Characteristics:

- 1.1 Contact resistance: 20mΩ Max.
- 1.2 Dielectric withstanding voltage: 500V AC for 1 minute
- 1.3 Insulation resistance: 1000MΩ Min.

2. Environment characteristics:

- 2.1 Operating temperature: 0°C to +85°C
- 2.2 Storage temperature: -20°C to +70°C



Recommend PCB Layout (Tolerance=±0.05)

| Item | Part Name | Materials | Finished |
|------|-----------|---------------|-------------|
| 1 | Housing | Thermoplastic | UL 94 V – 0 |
| 2 | Contact | Copper alloy | Gold plated |

| Part No. | Pins | Dimensions | | | |
|----------|------|------------|-------|-------|-------|
| | | A±0.5 | B±0.3 | C | D±0.2 |
| 22-1720 | 08 | 10.16 | 7.62 | 10.16 | 7.62 |
| 22-1721 | 14 | 17.78 | 15.24 | 10.16 | 7.62 |
| 22-1722 | 16 | 20.32 | 17.78 | 10.16 | 7.62 |
| 22-1723 | 18 | 22.86 | 20.32 | 10.16 | 7.62 |
| 22-1724 | 20 | 25.40 | 22.86 | 10.16 | 7.62 |
| 22-1725 | 24 | 30.48 | 27.94 | 10.16 | 7.62 |
| 22-1726 | 28 | 35.56 | 33.02 | 10.16 | 7.62 |
| 22-1727 | 24 | 30.48 | 27.94 | 17.78 | 15.24 |
| 22-1728 | 28 | 35.56 | 33.02 | 17.78 | 15.24 |
| 22-1729 | 32 | 40.64 | 38.10 | 17.78 | 15.24 |
| 22-1730 | 40 | 50.80 | 48.26 | 17.78 | 15.24 |