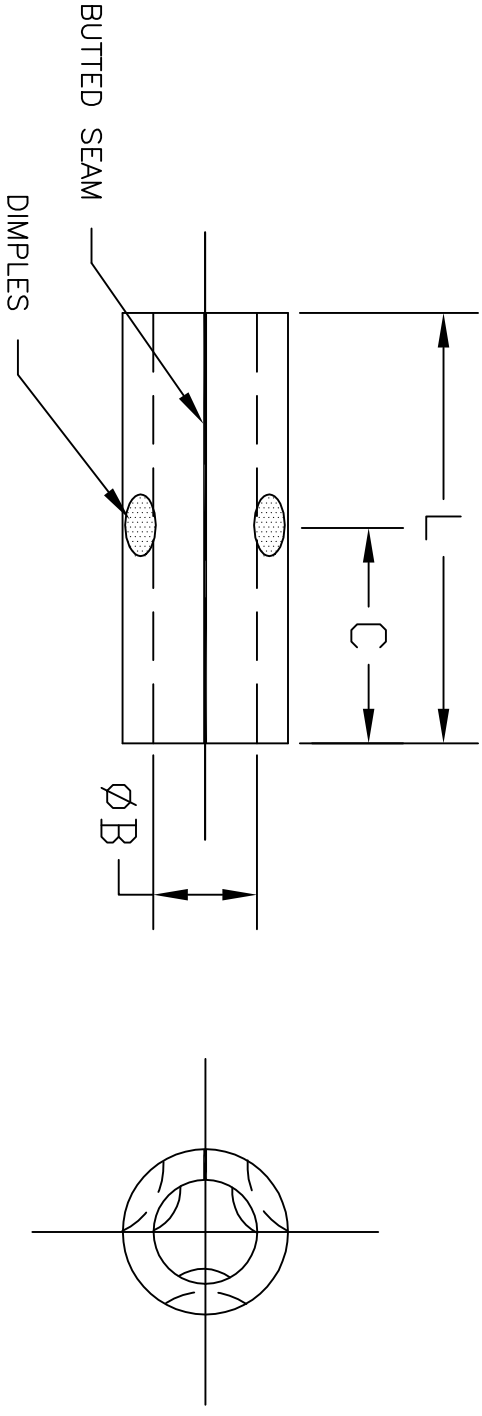


ALL RIGHTS RESERVED. NO PORTION OF THIS PUBLICATION, WHETHER IN WHOLE OR IN PART CAN BE REPRODUCED WITHOUT THE EXPRESS WRITTEN CONSENT OF SPC TECHNOLOGY.

REVISIONS		DOC. NO. SPC-F005	* Effective: 12/21/98		* DCP No: 880	
DCP #	REV	DESCRIPTION	DRAWN	DATE	CHECKD	DATE
	B	Material changed from steel		11/23/94		
1116	C	Was dwg #CCS-T0-1*1*	JMM	6/01/01	JC	6/20/01



PART NO.	WIRE RANGE (AWG)	DIAMETER 'B'	L	C	WALL THICKNESS
CCS-T0-1010	12-10	.135	.56	.28	.040
CCS-T0-1414	16-14	.090	.56	.28	.030
CCS-T0-1818	22-18	.070	.56	.28	.030

NOTES:

1. MATERIAL: ANNEALED COPPER
FINISH: ELECTRO-TIN PLATING
2. CONTINUOUS OPERATING TEMPERATURE:
-40°F (-40°C) TO 347°F (175°C)
3. VOLTAGE RATING: 600 V.
4. TO BE FREE OF BURRS.



DISCLAIMER:
ALL STATEMENTS AND TECHNICAL INFORMATION CONTAINED HEREIN ARE BASED UPON INFORMATION AND/OR TESTS WE BELIEVE TO BE ACCURATE AND RELIABLE SINCE CONDITIONS OF USE ARE BEYOND OUR CONTROL. THE USER SHALL DETERMINE THE SUITABILITY OF THE PRODUCT FOR THE INTENDED USE AND ASSUME ALL RISK AND LIABILITY WHATSOEVER IN CONNECTION THEREWITH.



OSHA
Acceptable

SPC-F005.DWG

Tolerances: Unless Otherwise Specified: .X = ±.015 .XX = ±.010 .XXX = ±.005		DRAWN BY: JAP		DATE: 11/12/91	
CHECKED BY: JC		DATE: 11/21/91		DRAWING TITLE: Non-Insulated Butt Connectors	
APPROVED BY: JL		DATE: 11/21/91		SIZE: A	
SCALE: NTS		DWG. NO. TA-349		ELECTRONIC FILE TA-349.dwg	
U.O.M.: INCHES [mm]		SHEET: 1 OF 1		REV C	

