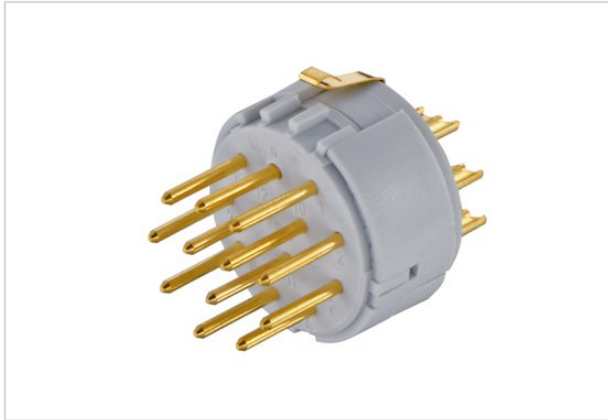


Han M23 12+PE Male -solder (termination)



| | |
|--------------------|---|
| Part number | 09 15 112 2622 |
| Specification | Han M23 12+PE Male -solder (termination) |
| HARTING eCatalogue | https://b2b.harting.com/09151122622 |

Identification

| | |
|----------|-----------------|
| Category | Inserts |
| Series | Han® M23 Signal |
| Element | Inserts |

Version

| | |
|--------------------|--------------------|
| Termination method | Solder termination |
| Gender | Male |
| Number of contacts | 11 |
| PE contact | Yes |

Technical characteristics

| | |
|-------------------------|------------------------|
| Conductor cross-section | 1 mm ² max. |
| Rated current | 8 A |
| Rated voltage | 200 V |
| Rated impulse voltage | 2.5 kV |
| Pollution degree | 3 |
| Insulation resistance | > 10 ¹⁰ Ω |
| Limiting temperature | -40 ... +125 °C |
| Mating cycles | ≥500 |

Material properties

| | |
|---------------------|--------------|
| Material (insert) | Polyamide |
| Colour (insert) | Grey |
| Material (contacts) | Copper alloy |



Pushing Performance

Material properties

| | |
|---|--|
| Surface (contacts) | Gold plated |
| Material flammability class acc. to UL 94 | V-0 |
| RoHS | compliant with exemption |
| RoHS exemptions | 6c: Copper alloy containing up to 4 % lead by weight |
| ELV status | compliant with exemption |
| China RoHS | 50 |
| REACH Annex XVII substances | No |
| REACH ANNEX XIV substances | No |
| REACH SVHC substances | Yes |
| REACH SVHC substances | Lead |

Specifications and approvals

| | |
|----------|-----------------------|
| UL / CSA | UL 1977 ECBT2.E235076 |
|----------|-----------------------|

Commercial data

| | |
|--------------------------------|---|
| Packaging size | 5 |
| Net weight | 7 g |
| Country of origin | Germany |
| European customs tariff number | 85366990 |
| eCl@ss | 27440205 Contact insert for industrial connectors |