

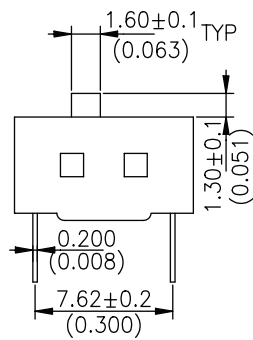
DIP Switches

Standard Type DIP Switch

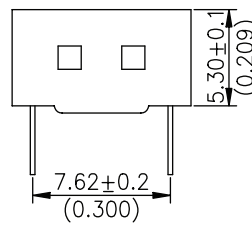
DX9 Series



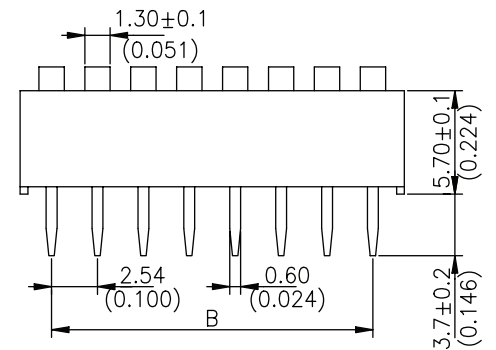
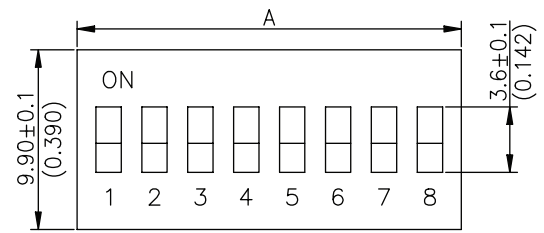
Unit: mm (inch)
General Tolerance: ±0.2mm



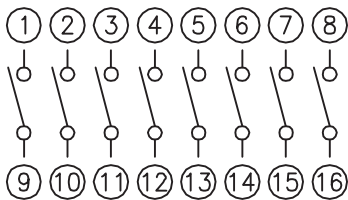
DX9A...



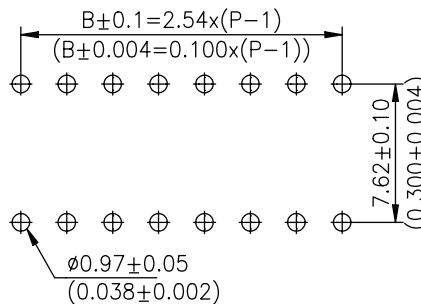
DX9C...



DX9A08...



CIRCUIT



P.C.B. LAYOUT

SPECIFICATIONS

- > Rating: 25mA24VDC (Switching)
100mA50VDC (Non-Switching)
- > Contact Resistance: 50 mOhms Max. (initial)
100 mOhms Max. after Life-Test
- > Insulation Resistance: 100 MOhms Min. (500VDC)
- > Dielectric Strength: 500VAC 1 Minute
- > Capacitance: 5pF Max.
- > Operating Force: 800gf Max.
- > Stroke: 2.0mm
- > Operating Life: 2,000 Cycles
- > Resistance Low Temperature: -40±3°C 96 Hours
- > Resistance High temperature: +85±2°C 96 Hours
- > Resistance Humidity: 40±2°C, 90~95%, 96 Hours
- > Soldering Conditions: 30 watts, 320°C 2 Seconds Max.
- > Packaging: In Tubes

P/N	No. of Positions "P"	Dimension "A"
DX9...01...	1	3.84(0.151)
DX9...02...	2	6.08(0.239)
DX9...03...	3	8.92(0.351)
DX9...04...	4	11.16(0.439)
DX9...05...	5	13.70(0.539)
DX9...06...	6	16.24(0.639)
DX9...07...	7	19.08(0.751)
DX9...08...	8	21.32(0.839)
DX9...09...	9	24.16(0.951)
DX9...10...	10	26.40(1.039)
DX9...12...	12	31.48(1.239)

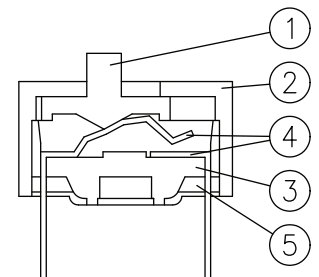
MATERIALS

- 1. Actuators: Thermoplastic UL94V-0 white
- 2. Cover: Thermoplastic UL94V-0 blue, red or black
- 3. Base: Thermoplastic UL94V-0 black
- 4. Terminals: Phosphor Bronze with Gold plated
- 5. Potting: Epoxy black

HOW TO ORDER:



- | | | | |
|---|---|---|-------------------------------|
| 1 ACTUATOR TYPE:
A Raised Actuators
C Recessed Actuators | 2 NO. OF POSITIONS:
01 1 Position
02 2 Positions
03 3 Positions
04 4 Positions
05 5 Positions
06 6 Positions
07 7 Positions
08 8 Positions | 3 COLOR OF COVER:
G Blue (Standard)
C Red
A Black | 5 PACKAGING:
- Tube |
| | | 4 TAPE:
- Without Tape (Standard)
T With Tape sealed | |



All specifications are restricted to QA test criteria.
DRW: B.R. JIN, CHK: P.G. GAO, APP: F. H. KANG, DC: 2013-04-18 UPD: 2017-10-09.