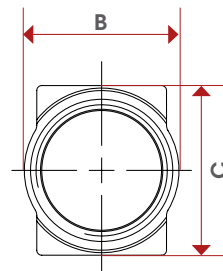
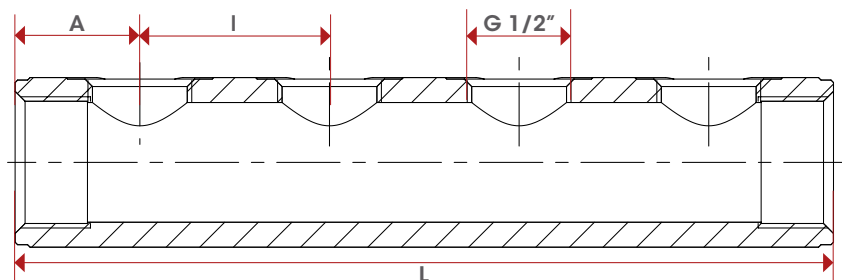
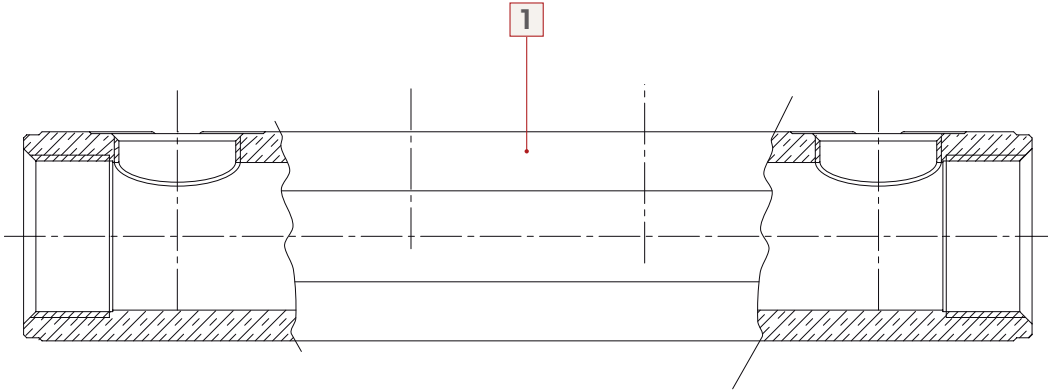


# 850



	3/4"		1"		1 1/4"
	↳38	↳50	↳38	↳50	↳50
L-2	88	100	98	110	110
L-3	126	150	136	160	160
L-4	164	200	174	210	210
L-5	202	250	212	260	260
L-6	240	300	250	310	310
L-7	278	350	288	360	360
L-8	316	400	326	410	410
L-9	354	450	364	460	460
L-10	392	500	402	510	510
L-11			440	560	560
L-12			478	610	610
A	25		30		30
B	31		37,5		47
C	34		37		50
Kg/cm² bar	10		10		10
LBS - psi	145		145		145



Pos.	DESCRIZIONE / DESCRIPTION	Qt.	MATERIALE / MATERIAL
1	Corpo / Body	1	Ottone / Brass CW614N (PB3)



# DECLARATION OF CONFORMITY

(According to EN ISO/IEC 17050-1)

The ITAP S.p.A. manufacturer of valves, fittings, manifolds and accessories for thermo-sanitary plants, with head office in via Ruca 19/21 – 25065 Lumezzane S.S. (BS) Italy.

## DECLARES

Under its sole responsibility that the distribution manifolds made out of brass bar have been built according to industry standards and conform to their technical specifications, respecting the Company Quality System complies with UNI EN ISO 9001.

Lumezzane 19 November 2013

Industrial Manager.

  
ITAP S.p.A.  
IL CONSIGLIERE DELEGATO  
EZIO PATTI