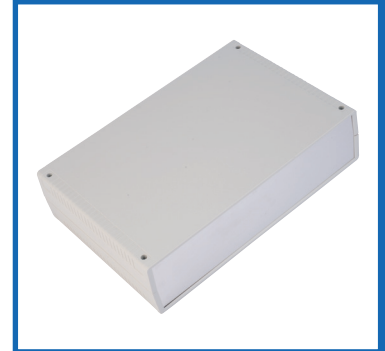


ABS Instrument Cases



DESCRIPTION

A range of instrument/modem cases featuring removable end panels, PCB stand-offs and card guides.

DISTINCTIVE FEATURES

- Tough ABS Construction
- Moulded PCB Stand-offs
- Moulded vertical card guides
- UL94-HB flame retardancy
- Brass inserts for repetitive assembly and disassembly
- Separate Aluminium End Panels
- Rubber feet included

APPLICATIONS

Economically priced, yet high quality, ABS case with removable end panels, ideally suited in height for housing test equipment, instrumentation, modems, etc., and other equipment.

ABS

UL94-HB

RAL7035





GENERAL SPECIFICATION

External Features	Removable end panels
Internal Features	PCB stand-offs, vertical card guides
Screw Type	⌀M3 x 35 mm, Flat head



MATERIALS

Enclosure Material	ABS (UL94-HB)
Enclosure Finish	Matt
Enclosure Colour	RAL7035
End Panel Material	Aluminium Alloy - AL1050
End Panel Finish	Light Brush
End Panel Colour	Natural
Screws	Zinc plated steel
Inserts	Brass



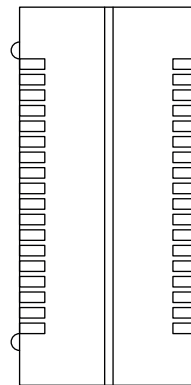
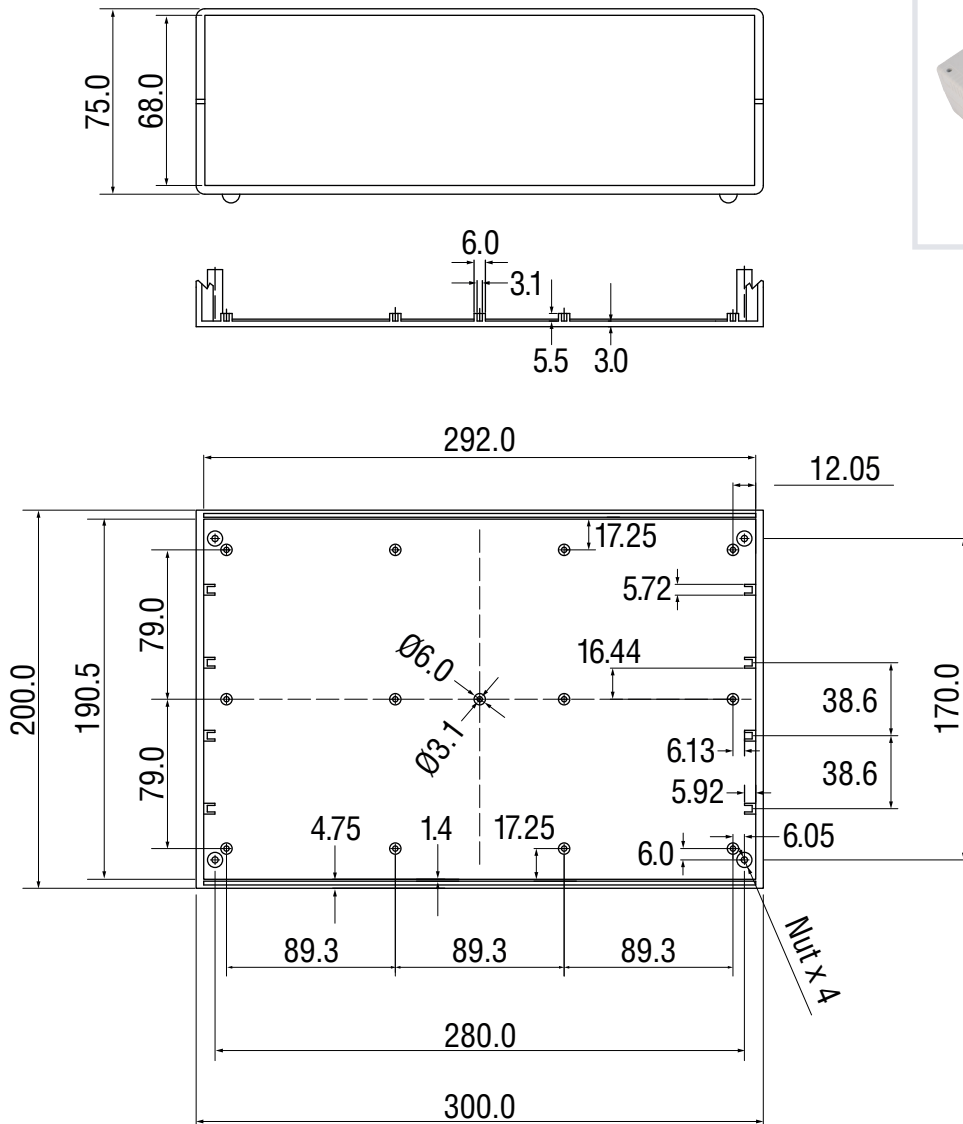
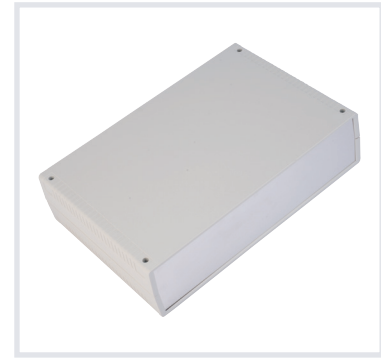
ENVIRONMENTAL/OPERATING SPECIFICATION

Flame Resistance	UL94-HB
IP Rating	At least IP40
Operating Temperature	-20 to +65°C



DIMENSIONS/DRAWINGS

Units	mm - unless stated otherwise
-------	------------------------------



PART NUMBER TABLE

Part Number	Weight (g)	EAN	UNSPSC	Country of Origin
52-4337	700	5053556005376	39121324	Taiwan

R-TECH

Tried & trusted technology

Important Notice: This data sheet and its contents (the "Information") belong to Rapid Electronics Limited or are licensed to it. No licence is granted for the use of it other than for information purposes in connection with the products to which it relates. No licence of any intellectual property rights is granted. The Information is subject to change without notice and replaces all data sheets previously supplied. The Information supplied is believed to be accurate but Rapid Electronics Limited assumes no responsibility for its accuracy or completeness, any error in or omission from it or for any use made of it. Users of this data sheet should check for themselves the Information and the suitability of the products for their purpose and not make any assumptions based on information included or omitted. Liability for loss or damage resulting from any reliance on the Information or use of it (including liability resulting from negligence or where Rapid Electronics Limited were aware of the possibility of such loss or damage arising) is excluded. This will not operate to limit or restrict Rapid Electronics Limited's liability for death or personal injury resulting from its negligence.