



OVERLOAD RELAY 27...32 A FOR MOTOR PROTECTION SZ S0, CLASS 10, STAND-ALONE INSTALLATION MAIN CIRCUIT: SPRING TERMINAL AUX. CIRCUIT: SPRING TERMINAL MANUAL-AUTOMATIC-RESET

| | | |
|---------------------|--|-----------------------------|
| product brand name | | SIRIUS |
| Product designation | | 3RU2 thermal overload relay |

| General technical data: | | |
|--|----|-------------|
| Active power loss total typical | W | 6.9 |
| Insulation voltage | | |
| • with degree of pollution 3 Rated value | V | 690 |
| Shock resistance | | |
| • acc. to IEC 60068-2-27 | | 8g / 11 ms |
| Surge voltage resistance Rated value | kV | 6 |
| Temperature compensation | °C | -40 ... +60 |
| Size of contactor can be combined company-specific | | S0 |
| Type of assignment | | 2 |
| Protection class IP | | |
| • on the front | | IP20 |
| • of the terminal | | IP20 |
| Equipment marking | | |
| • acc. to DIN EN 81346-2 | | F |

| Main circuit: | | |
|---|----|-----------|
| Number of poles for main current circuit | | 3 |
| Adjustable response value current of the current-dependent overload release | A | 27 ... 32 |
| Operating voltage | | |
| • Rated value | V | 690 |
| • at AC-3 Rated value maximum | V | 690 |
| Operating frequency Rated value | Hz | 50 ... 60 |

| | | |
|--------------------------------------|---|----|
| Operating current Rated value | A | 32 |
| Operating current | | |
| • at AC-3 | | |
| — at 400 V Rated value | A | 32 |

Auxiliary circuit:

| | | |
|---|---|-----------------------------|
| Number of NC contacts | | |
| • for auxiliary contacts | | 1 |
| — Note | | for contactor disconnection |
| Number of NO contacts | | |
| • for auxiliary contacts | | 1 |
| — Note | | for message "Tripped" |
| Number of CO contacts | | |
| • for auxiliary contacts | | 0 |
| Design of the auxiliary switch | | integrated |
| Operating current of the auxiliary contacts at AC-15 | | |
| • at 24 V | A | 3 |
| • at 110 V | A | 3 |
| • at 120 V | A | 3 |
| • at 125 V | A | 3 |
| • at 230 V | A | 2 |
| • at 400 V | A | 1 |
| Operating current of the auxiliary contacts at DC-13 | | |
| • at 24 V | A | 2 |
| • at 110 V | A | 0.22 |
| • at 125 V | A | 0.22 |
| • at 220 V | A | 0.11 |

Protective and monitoring functions:

| | | |
|---|--|----------|
| Trip class | | CLASS 10 |
| Design of the overload circuit breaker | | thermal |

UL/CSA ratings:

| | | |
|--|---|-------------|
| Full-load current (FLA) for three-phase AC motor | | |
| • at 480 V Rated value | A | 32 |
| • at 600 V Rated value | A | 32 |
| Contact rating of the auxiliary contacts acc. to UL | | B600 / R300 |

Installation/ mounting/ dimensions:

| | | |
|--------------------------|----|--------------------------|
| mounting position | | any |
| Mounting type | | stand-alone installation |
| Height | mm | 114 |
| Width | mm | 45 |
| Depth | mm | 95 |
| Required spacing | | |

| | | |
|------------------------------|----|---|
| • with side-by-side mounting | | |
| — forwards | mm | 0 |
| — Backwards | mm | 0 |
| — upwards | mm | 6 |
| — downwards | mm | 6 |
| — at the side | mm | 6 |
| • for grounded parts | | |
| — forwards | mm | 0 |
| — Backwards | mm | 0 |
| — upwards | mm | 6 |
| — at the side | mm | 6 |
| — downwards | mm | 6 |
| • for live parts | | |
| — forwards | mm | 0 |
| — Backwards | mm | 0 |
| — upwards | mm | 6 |
| — downwards | mm | 6 |
| — at the side | mm | 6 |

Connections/ Terminals:

| | | |
|--|--|---|
| Type of electrical connection | | |
| • for main current circuit | | spring-loaded terminals |
| • for auxiliary and control current circuit | | spring-loaded terminals |
| Arrangement of electrical connectors for main current circuit | | Top and bottom |
| Product function | | |
| • removable terminal for auxiliary and control circuit | | No |
| Type of connectable conductor cross-section | | |
| • for main contacts | | |
| — single or multi-stranded | | 1x (1 ... 10 mm ²) |
| — finely stranded with core end processing | | 1x (1 ... 6 mm ²) |
| — finely stranded without core end processing | | 1x (1 ... 6 mm ²) |
| • for AWG conductors for main contacts | | 1x (18 ... 8) |
| • for auxiliary contacts | | |
| — single or multi-stranded | | 2x (0,5 ... 2,5 mm ²) |
| — finely stranded with core end processing | | 2x (0.5 ... 1.5 mm ²), 2x (0.75 ... 2.5 mm ²) |
| — finely stranded without core end processing | | 2x (0.5 ... 1.5 mm ²) |
| • for AWG conductors for auxiliary contacts | | 2x (20 ... 14) |
| Design of screwdriver shaft | | 5 to 6 mm diameter |

Safety related data:

| | | |
|---|-----|-------------|
| Proportion of dangerous failures | | |
| • with low demand rate acc. to SN 31920 | % | 50 |
| • with high demand rate acc. to SN 31920 | % | 50 |
| Failure rate [FIT] with low demand rate acc. to SN 31920 | FIT | 50 |
| MTTF with high demand rate | y | 2 280 |
| T1 value for proof test interval or service life acc. to IEC 61508 | y | 20 |
| Protection against electrical shock | | finger-safe |

Mechanical data:

| | | |
|-------------------------------|--|----|
| Size of overload relay | | S0 |
|-------------------------------|--|----|

Ambient conditions:

| | | |
|--|----|-------------|
| Installation altitude at height above sea level maximum | m | 2 000 |
| Ambient temperature | | |
| • during operation | °C | -40 ... +70 |
| • during storage | °C | -55 ... +80 |
| • during transport | °C | -55 ... +80 |
| Relative humidity during operation | % | 0 ... 90 |

Display:

| | | |
|------------------------|--|--------------|
| Display version | | |
| • for switching status | | Slide switch |

Certificates/ approvals:

| | | |
|--------------------------|--------------------------------|---------------------------|
| General Product Approval | For use in hazardous locations | Declaration of Conformity |
|--------------------------|--------------------------------|---------------------------|



| | |
|-------------------|-------------------|
| Test Certificates | Shipping Approval |
|-------------------|-------------------|

[Special Test Certificate](#)

[Type Test Certificates/Test Report](#)



| | |
|-------------------|-------|
| Shipping Approval | other |
|-------------------|-------|



[Environmental Confirmations](#)

Further information

Information- and Downloadcenter (Catalogs, Brochures,...)

<http://www.siemens.com/industrial-controls/catalogs>

Industry Mall (Online ordering system)

<http://www.siemens.com/industrymall>

Cax online generator

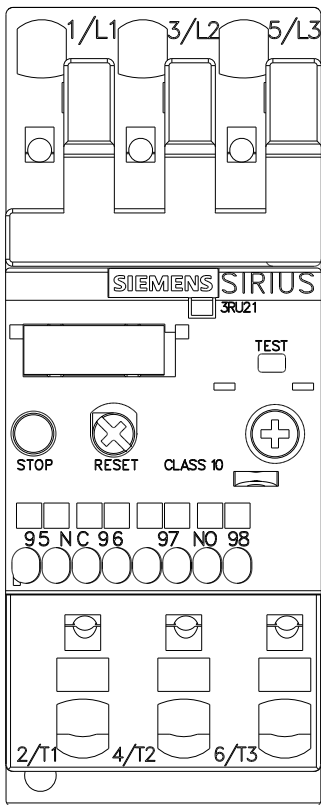
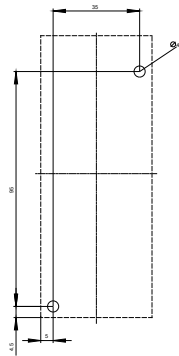
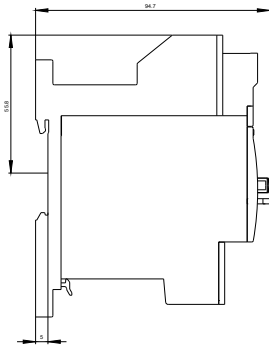
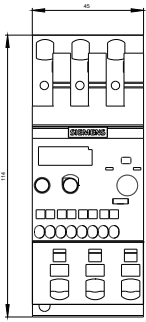
<http://support.automation.siemens.com/WW/CAXorder/default.aspx?lang=en&mfb=3RU21264EC1>

Service&Support (Manuals, Certificates, Characteristics, FAQs,...)

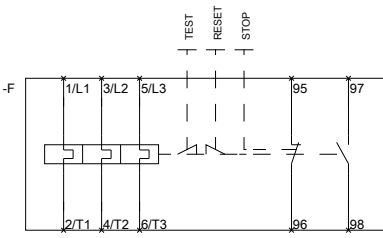
<http://support.automation.siemens.com/WW/view/en/3RU21264EC1/all>

Image database (product images, 2D dimension drawings, 3D models, device circuit diagrams, EPLAN macros, ...)

http://www.automation.siemens.com/bilddb/cax_de.aspx?mfb=3RU21264EC1&lang=en



~~MEBERRASSTREZLAIS FUER~~



last modified:

11.03.2015

~~OVERLOPABORRELAYONDR~~