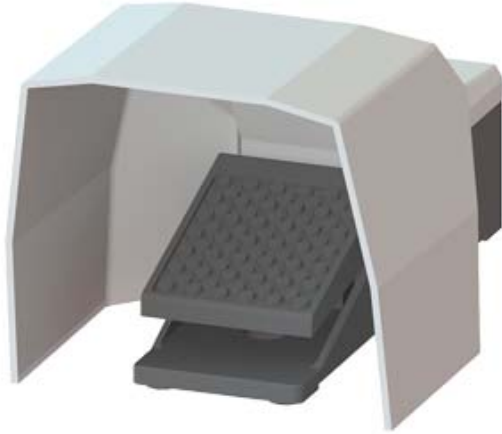


FOOT-OPERATED BUTTON, SINGEL PEDAL
(WITHOUT LATCHING) CABLE ENTRY M20X1,5 IP 65,
2NO + 2NC WITH COVER



Product designation		momentary-contact foot switch
General technical data:		
Protection class IP		IP65
Equipment marking		S
<ul style="list-style-type: none"> • acc. to DIN EN 61346-2 • acc. to DIN EN 81346-2 		S
Number of switching steps		1
Number of the actuation pedals		1
Operating current at AC-15		
<ul style="list-style-type: none"> • at 230 V Rated value • at 400 V Rated value 	A	6
	A	6
Enclosure:		
Material of the enclosure		metal
Color		
<ul style="list-style-type: none"> • of the enclosure • of top part of the enclosure 		black
		grey
Safety related data:		
B10 value with high demand rate acc. to SN 31920		1 000 000
Proportion of dangerous failures		
<ul style="list-style-type: none"> • with low demand rate acc. to SN 31920 • with high demand rate acc. to SN 31920 	%	50
	%	50
Failure rate [FIT] with low demand rate acc. to SN 31920	FIT	100

T1 value for proof test interval or service life acc. to IEC 61508	y	20
--	---	----

Mechanical data:

Cable entry type		M20 x 1.5
------------------	--	-----------







Ambient conditions:

Ambient temperature		
• during operation	°C	-25 ... +80

Installation/ mounting/ dimensions:

Mounting type		screw fixing
Height	mm	265
Width	mm	156
Depth	mm	138

Certificates/ approvals:

General Product Approval	Declaration of Conformity	Shipping Approval
 CSA		 EG-Konf.
		 ABS
		 LRS
		 PRS

Shipping Approval	other
-------------------	-------



[other](#)

[Confirmation](#)

Further information

Information- and Downloadcenter (Catalogs, Brochures,...)

<http://www.siemens.com/industrial-controls/catalogs>

Industry Mall (Online ordering system)

<http://www.siemens.com/industrymall>

Cax online generator

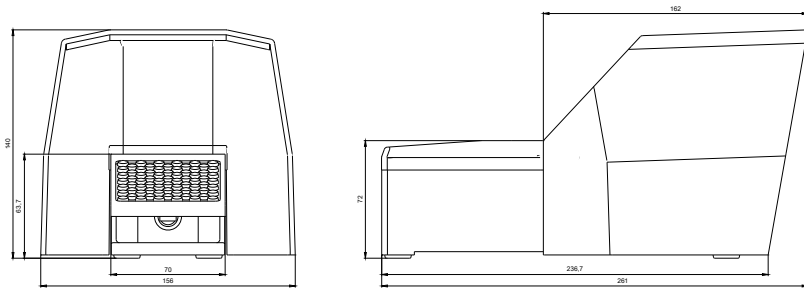
<http://support.automation.siemens.com/WW/CAXorder/default.aspx?lang=en&mlfb=3SE29031AA20>

Service&Support (Manuals, Certificates, Characteristics, FAQs,...)

<http://support.automation.siemens.com/WW/view/en/3SE29031AA20/all>

Image database (product images, 2D dimension drawings, 3D models, device circuit diagrams, EPLAN macros, ...)

http://www.automation.siemens.com/bilddb/cax_de.aspx?mlfb=3SE29031AA20&lang=en



last modified:

09.03.2015