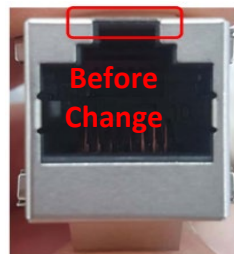
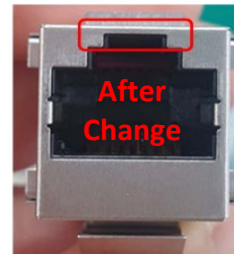


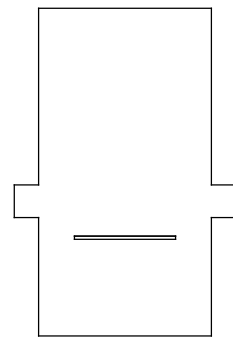
Amphenol Commercial Products - Product Change Notice (PCN)



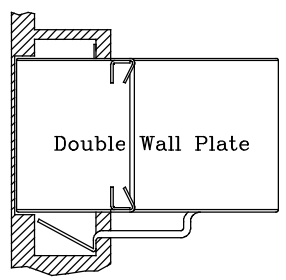
PCN Number	PCN-C05050
Description of Change	Material added to shield at top of notch.
Reason for Change	Enhanced strength / durability of shield.
Summary of Changes (between new and old part)	<div style="display: flex; justify-content: space-around; align-items: center;">   </div>
Traceability Guidelines (lot code / date code, markings, ship date...)	Running change - planned to cut in for date codes 2342 and later.
Last Time Buy Date	N/A
Datasheet attached? & Filename(s)	P-RJE17-288-1X21-REVF
Qual test data attached? & Filename(s)	N/A

Customer Part Number	Amphenol Old Part Number	Amphenol New Part Number	PCN Effectivity Date	Samples Availability Date	Last Time Purchase Date	Expected Supplier Qual Date
	RJE17-288-1121	NO CHANGE	2023-10-16	2023-10-16	N/A	N/A
	RJE17-288-1221					
	RJE17-288-1321					
	RJE17-288-1421					

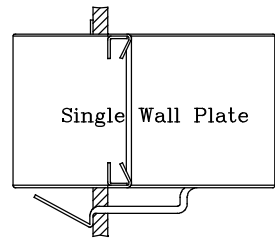
REVISIONS			
REV	DESCRIPTION, ECN, EAR NO.	DATE	APP'D
A	PROPOSAL	AUG 11/15	L.CHAN
B	DELETE LOGO	MAY 17/17	L.CHAN
C	UPDATE DRAWING	JUL 07/17	L.CHAN
D	UPDATE DRAWING	JUL 12/17	L.CHAN
E	ADD COUPLER INTERACTS WITH WALL	JUL 27/17	L.CHAN
F	UPDATE DRAWING	FEB 14/19	L.CHAN



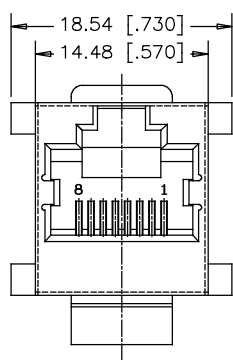
TOP VIEW



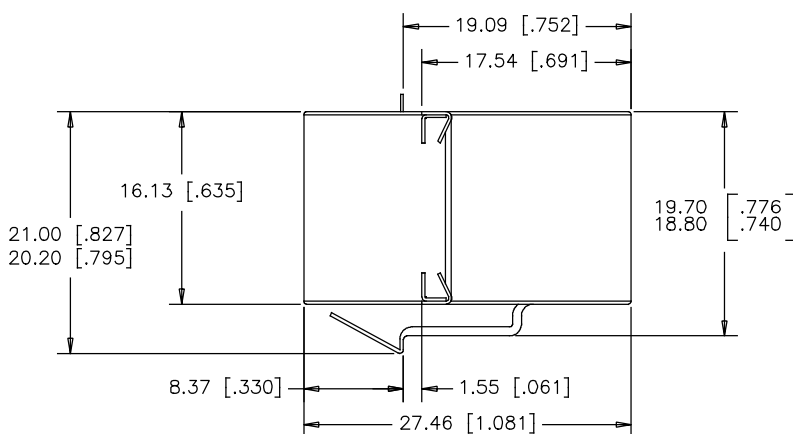
Double Wall Plate



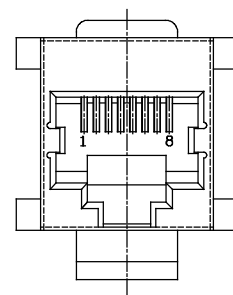
Single Wall Plate



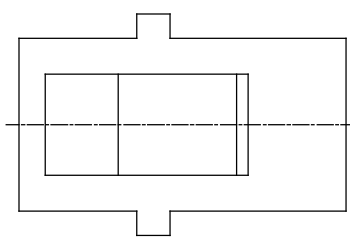
FRONT VIEW



SIDE VIEW



REAR VIEW



BOTTOM VIEW

MATERIALS:

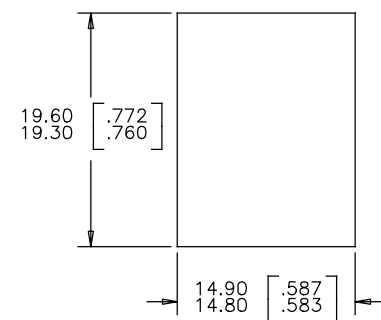
HOUSING: ENGINEERING THERMOPLASTIC
FLAMMABILITY RATING UL 94V-0.
COLOUR: BLACK

SHIELD: STAINLESS STEEL.

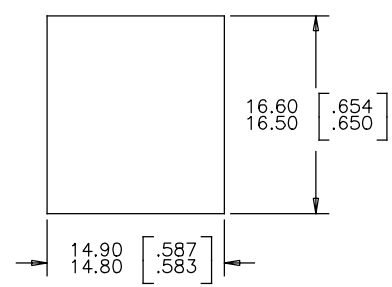
CONTACT: PHOSPHOR BRONZE.
PLATING: SELECTIVE GOLD PLATING ON MATING SURFACES
SEE AMPHENOL PART NUMBER FOR DETAIL.
50 u"[1.27 MICRONS]MIN. NICKEL UNDERPLATE.

AMPHENOL PART NUMBER: RJE17-288-1X21

- 1= 6u" GOLD PLATING
- 2= 15u" GOLD PLATING
- 3= 30u" GOLD PLATING
- 4= 50u" GOLD PLATING



SINGLE PANEL - LATCH CLEARANCE
PANEL THICKNESS 1.57 [.062]



RECOMMENDED CUTOUT FOR JACK
CLEARANCE WITHOUT LATCH FEATURE

UNLESS SPECIFIED OTHERWISE		DRAWN <i>Frank.W</i>	DATE <i>AUG 11/15</i>	Amphenol Canada Corp. Commercial Products		
PRIMARY UNITS	MILLIMETER	CHECKED <i>LAWRENCE.C</i>	<i>AUG 11/15</i>			
SECONDARY	INCH	M.E. APP'D		TITLE MODULAR COUPLER JACK, 8 POSITION, 8 CONTACTS, WITH SHIELD, WITH FLANGE (WITH PANEL LATCH)—RoHS COMPLIANT		
REFERENCE IN PARENTHESES		Q.A. APP'D				
GENERAL TOLERANCES		DWG APPR.		DWG. NO. <div>P-RJE17-288-1X21</div> <div>CODE ID NO. 03554 DWG SIZE: C SCALE: <i>N/A</i> SHEET 1 OF 1</div>		
1 DECIMAL PLACE	±0.30	ENG. REL. NO.				
2 DECIMAL PLACES	±0.25	REF.				
3 DECIMAL PLACES	±0.20	THIRD ANGLE PROJECTION	DO NOT SCALE DRAWING			
ANGULAR DEGREES	±1.0°					